



Welcome!

Downtown Safety Forum

8:30-9:30 a.m. Thursday  
January 15, 2026

**DOWN  
AUSTIN TOWN  
ALLIANCE**

- Announcements
- APD Update – Lt. Eric Cleveland
- Homeless Outreach Street Team (HOST) – Amber Price & Christopher Roesel
- Downtown Alliance 2025 Year-end Dashboard – Brandon Fahy
- Upcoming Conferences & Events
- Open Q&A

## Today's Agenda

**DOWN  
AUSTINTOWN  
ALLIANCE**

Downtown Austin Alliance  
*Spring Festival Season Forum*

Thursday, February 19  
8:30—9:30 a.m. (Via Zoom)

Austin Police  
Department

Lieutenant  
Eric Cleveland

[Eric.Cleveland@austintexas.gov](mailto:Eric.Cleveland@austintexas.gov)



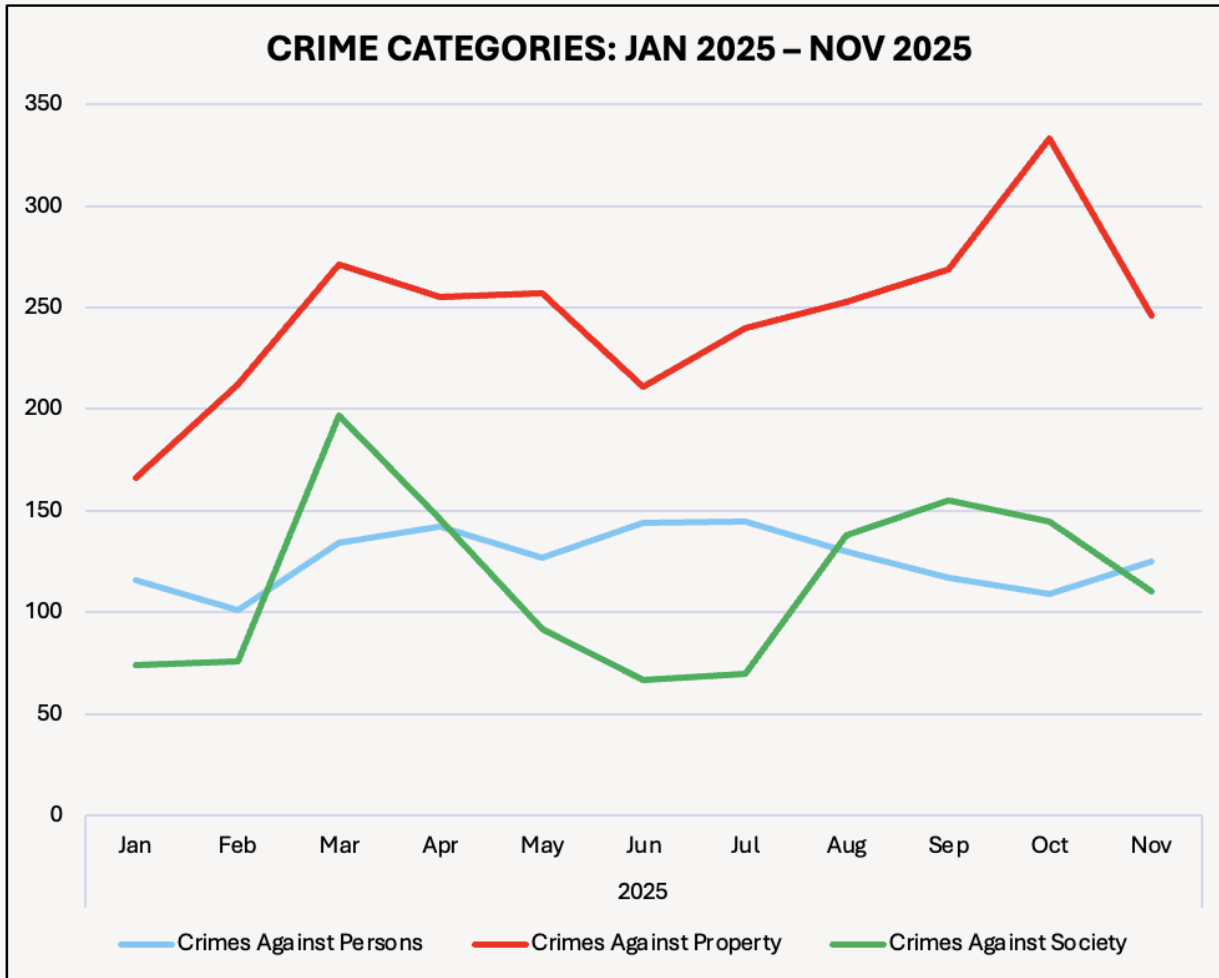


# **Downtown Crime Data: 1/1/2025 – 11/30/2025**

---

Austin Police | January 15, 2026

# Overview: January 2025 – November 2025



**DURING JANUARY 2025 – NOVEMBER 2025**

**A little over half** of reported activity in George are Crimes Against Property.

- Data trends as expected across all categories
- A general decline / steady low is observed in January and February 2025
- Crimes Against Property and Society peak in March 2025 (likely SXSW)
- Crimes Against Property peak, again, in October 2025
  - This is likely a reflection of the large increase in Pocket Picking from Halloween weekend
  - Rate is observed to return to “normal” in November 2025

Crimes Against Society are of note, especially beginning in August 2025. An increase in targeted and focused enforcement in this regard is in place and leads to an increase in reports of activity.

# CRIMES AGAINST PERSONS: JANUARY 2025 – NOVEMBER 2025

## TOP 3 CRIMES AGAINST PERSONS

*Simple Assault*

*Intimidation*

*Aggravated Assault*

Simple Assaults account for **roughly 65%** of all reported Crimes Against Persons.  
Intimidations account for **a little over 20%** of all reported Crimes Against Persons.  
Aggravated Assaults are **about 6%** of all reported Crimes Against Persons.

Data indicates a relatively steady level of activity for Simple Assault and Intimidation across the observed date range. Aggravated Assaults occur less frequently and are not consistent month-to-month.

Unless an officer witnesses a Simple Assault, they are often reported after-the-fact; limitations to investigations.

“Hot” areas are the Republic Square Park area and the general E 5th – E 8th / San Jacinto St – Red River St area.

In addition, it is worth considering the potential for temporal fluctuations across overall activity with several downtown- and city-wide events occurring (e.g., Football, Levitation Music Festival, ACL, Formula 1, Halloween, etc.)

## CRIMES AGAINST PROPERTY: JANUARY 2025 – NOVEMBER 2025

### TOP 3 CRIMES AGAINST PROPERTY

*Theft: All Other Larceny*

*Pocket Picking*

*Destruction / Damage / Vandalism of Property*

Theft: All Other Larceny account for **about 30%** of all reported Crimes Against Property.

Pocket Picking account for **roughly 20%** of all reported Crimes Against Property.

Destruction are **about 16%** of all reported Crimes Against Property.

Data indicates that activity, overall, remained relatively steady during Jan 2025 – Nov 2025. Pocket Picking is observed to have peaked in October 2025, which is consistent with the spike in activity during Halloween weekend; the rate appears to have returned to “normal” in November 2025.

Increased Crimes Against Property activity may be observed in the later months of the year due to seasonal events and/or holidays (i.e., increased presence of people **may** lead to increased opportunity for crime to occur)

“Hot” areas generally surround the entertainment areas – increased persons, vehicles, and overall presence in these areas is common.

## CRIMES AGAINST SOCIETY: JANUARY 2025 – NOVEMBER 2025

### TOP 3 CRIMES AGAINST SOCIETY

*Drug / Narcotic Violations\**

*Drug Equipment Violations\**

*Weapon Law Violations*

Narcotic Violations account for **over half** of all reported Crimes Against Society.

Drug Equipment Violations account for **roughly 45%** of all reported Crimes Against Society.

Weapon Law Violations are **less than 10%** of all reported Crimes Against Society.

Crimes Against Society are of note in 2025. Several operations and focused efforts among Patrol, Investigative, and specialized units were deployed and/or are still in place targeting **proactive and increased enforcement** – resulting in an increase of reports for Crimes Against Society.

In addition, it is worth considering the potential for temporal fluctuations across overall activity with several downtown- and city-wide events occurring (e.g., Football, Levitation Music Festival, ACL, Formula 1, Halloween, etc.). These types of events are especially relevant with consideration to drug activity. Large events typically lead to increased law enforcement presence which inherently leads to an increase in reporting.

# Resource Deployment Strategies

---

Changes made in August 2025 to adapt to  
crime trends

# Resource Deployment Strategies

- Creation of the Public Order Team
- Creation of the Downtown Austin Rapid Response Team (DARRT) comprised of detectives that collaborate efforts with patrol, the Public Order Team, and the DTAC Crime Analyst.
- Dedicated foot & bicycle patrol assignments for Congress Ave every day.

# Resource Deployment Strategies

- Creation of the Public Order Team
- Creation of the Downtown Austin Rapid Response Team (DARRT) comprised of detectives that collaborate efforts with patrol, the Public Order Team, and the DTAC Crime Analyst.
- Dedicated foot & bicycle patrol assignments for Congress Ave every day.
- Dedicated foot, bicycle, ATV, Polaris patrol assignments for E Sixth street during weekday evenings
- Mandate for relentless high visibility patrol at Republic Square Park, Brush Square Park, Waller Creek, etc.
- Reinforced focus on quality of life crime enforcement and restoration of public spaces

# Public Order Enforcement

August – December 2025 (est. 150 days)

- **1,554** Pedestrian Stops
- **239** Citations – Sit & Lie Ordinance
- **139** Citations – Drug Paraphernalia
- **408** Misdemeanor Criminal Citations
- **111** Misdemeanor Custody Arrests
- **133** Felony Custody Arrests

# Public Order Enforcement

August – December 2025 (est. 150 days)

- 1,554 Pedestrian Stops
- 239 Citations – Sit & Lie Ordinance
- 139 Citations – Drug Paraphernalia
- 408 Misdemeanor Criminal Citations
- 111 Misdemeanor Custody Arrests
- 133 Felony Custody Arrests

## Aggregate Narcotic Seizures

- **44 grams** Crack Cocaine = 220 individual sales amounts (*approximated*)
- **106 grams** Methamphetamine = 530 individual sales amounts (*approximated*)
- **1.2 kilos** of “K2” Synthetic Cannabinoids

—  
Thank you!

Lieutenant  
Eric Cleveland

[Eric.Cleveland@austintexas.gov](mailto:Eric.Cleveland@austintexas.gov)  
512-974-5255



# Homelessness Outreach Street Team ("HOST")



**Amber Price – Austin/Travis County EMS**  
**Christopher Roesel – Integral Care**

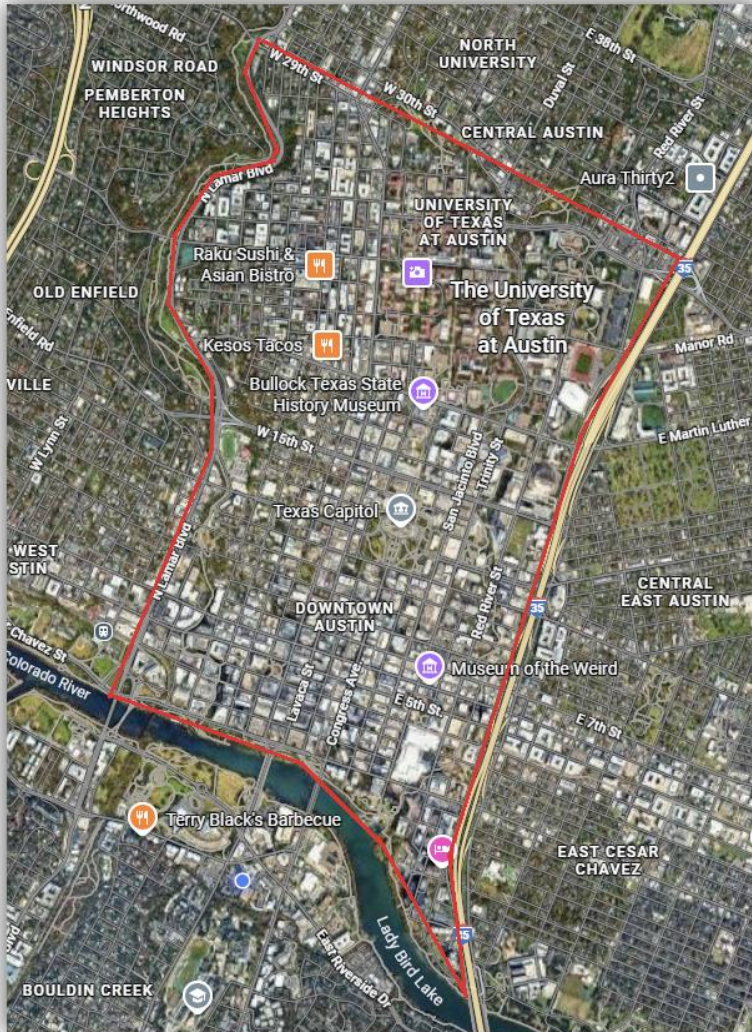


**Integral Care**

**Homeless Outreach Street Team**

<b>Agency</b>	<b>Staff Complement</b>
Integral Care	5 full-time
Austin-Travis County EMS	4 rotating
Austin Community Court	1 full-time
Austin Police Department	2 rotating

- **Target Population:**
  - **Experiencing chronic, unsheltered homelessness**
  - **Untreated acute or chronic medical or mental health needs**
  - **High-utilizers of emergency, hospital, and criminal justice systems**
  - **Vulnerable due to factors such as age or ability**
- **Build rapport through repeated engagement**
- **Provide direct care when possible, otherwise refer**
- **Connect any individual we encounter with any suitable and available resource**



**The bulk of our work occurs in the area bordered by I-35, 29th, Lamar, and Lady Bird Lake**

**We regularly go outside this area as community needs dictate**

**We operate Mon-Fri 8a-4p**

Service	FY 25 Total
Medical Services	632
Mental Health Services	752

**Medical Services:** Assessment and direct care; referral to medical team or clinic; appointment scheduling and support; obtaining prescriptions; med reminders; MAP enrollment; durable medical equipment

**Mental Health Services:** Assessment and direct care; de-escalation/crisis intervention; crisis respite/hospital placement; transition into Integral Care services; appointment scheduling and support; obtaining prescriptions; med reminders; case manager linkage; emergency detention

Service	FY 25 Total
Housing Navigation & Support	377
Document or Benefit Assistance	373
Obtained Permanent Housing	50

**Housing Navigation:** Housing applications; deposit/fee assistance; PSH navigation; housing case manager linkage; living skills training

**Document/Benefit Assistance:** Birth certificate; Social Security card; DPS ID; ADP ID; Social Security income navigation; debit card assistance

**Obtained Permanent Housing:** Moved into a permanent unit, typically with a PSH, HACA, or HATC voucher, or into a Foundation Communities property or Community First! Village

Service	FY 25 Total
Basic Needs	1072
Coordinated Assessments	381
Total Shelter Admissions/Referrals	236

**Basic Needs:** Clothing, food, hygiene supplies, blankets, sleeping bags, bus passes, animal supplies

**Coordinated Assessments:** Ensuring enrollment in Austin ECHO's service coordination and voucher prioritization system

**Shelter Admissions:** Assist with placement at Marshalling Yard, ARCH, 8<sup>th</sup> St, Northbridge Southbridge, or Esperanza Community

Service	FY 25 Total
Total Unique Individuals Served	1027
Total Points of Contact	3162
Total Interventions	5093



Thank you!

Questions??

Join us for Issues Over Lunch: Infrastructure in Motion on January 26

# Downtown Dashboard



# Upcoming Events & Conferences

## January:

- **10–14** / SHI International Corp @ Hilton & Palmer Events Center (1,200)
- **11–19** / Stryker Medical Sales Meeting @ JW Marriott & Austin Marriott Downtown (1,300)
- **12–19** / Stryker Instruments Sales Meeting @ Fairmont (1,700)
- **18** / Austin International Half (formerly 3M Half Marathon) @ Downtown Austin
- **19** / MLK Day Festival @ University of Texas Campus
- **23–29** / Klaviyo Global Marketing Kickoff @ Fairmont (1,000)

## February:

- **1–4** / Texas Council of Administrators of Special Education @ JW Marriott (1,000)
- **1–6** / Procore Sales Kickoff @ Fairmont & Austin Marriott Downtown (1,800 )
- **1–28** / Black History Month celebrations @ various locations
- **15** / Austin Marathon @ Downtown Austin
- **18–22** / OUTsider Festival @ The Vortex
- **21–26** / Boomi Kickoff Meeting @ Fairmont (900)
- **21–March 1** / ATX Open @ Westwood Country Club
- **27–March 1** / NASCAR @ Circuit of the Americas
- **28–March 4** / FloQast All Hands Meeting @ Fairmont (925)



# Open Q&A

Spring Festival Season Forum

8:30-9:30 a.m. Thursday, February 19